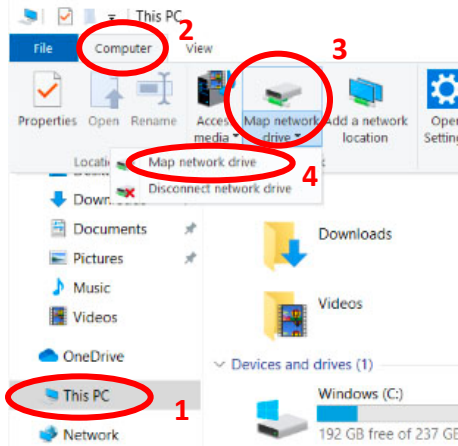


Mapping Network Drives From Home

Windows Devices

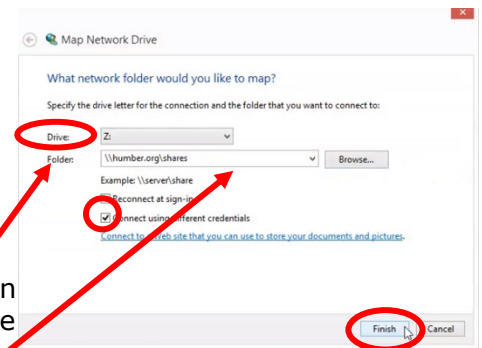
In order to map your network drives, you will need to be connected to the Humber network remotely, via VPN or the F5 Client. Once you are connected:



1. Navigate to your File Explorer and click on **This PC**.
2. Choose **Computer** from the menu.
3. Click **Map network drive**.
4. Select the drop-down **Map network drive**, and a new window will open.

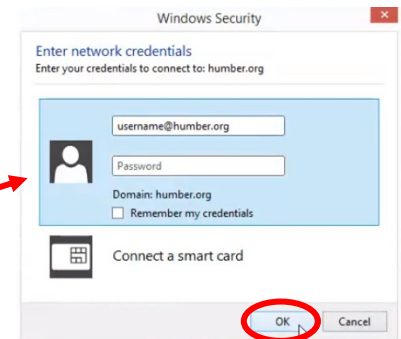
For Departmental I-Drive:

1. Choose a letter to represent the I-Drive from the Drive drop-down box. Consider not using I: as the name to differentiate from your work version.



2. In the Folder area, type: [\\humber.org\shares\departmental](https://humber.org/shares/departmental).
3. Check the 'Connect using different credentials'.
4. Click **Finish**.

You may be asked to authenticate. This is your Humber username and password. Click **OK**.



For H-Drive:

1. To map your H-Drive, follow the steps for the I-Drive. Choose a letter to represent your H-Drive from the drop-down box. Consider not using H: as the name to differentiate from your work version. In the Folder area, you will need to use a certain path based on your username (see below).
2. Click **Finish**.

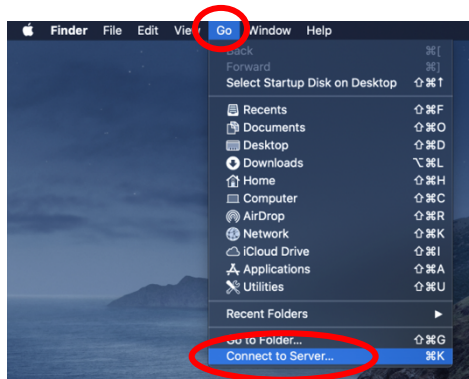
Legacy Accounts	Example
\\humber.org\home\01\a-m\username	Joe Black's username is black, so he would type: \\humber.org\home\01\b\black Ann Jones' username is jnnn1234, so she would type: \\humber.org\home\01\j\jnnn1234
\\humber.org\home\02\n-z\username	Sue Smith's username is smithsue, so she would type: \\humber.org\home\02\s\smithsue John Taylors' username is tylj9876, so he would type: \\humber.org\home\02\t\tylj9876 Barb Peterson's username is wspeterb, so she would type: \\humber.org\home\02\w\wspeterb
N-number Accounts	
\\humber.org\home\03\9999\n99999999 After the \03\ is the first 4 digits of your N-numbered username.	Bob Brown's username is n01234567, so he would type: \\humber.org\home\03\0123\n01234567 Jane White's username is n03231234, so she would type: \\humber.org\home\03\0323\n03231234

Your mapped drives will appear in your File Explorer just like they appear while on campus.

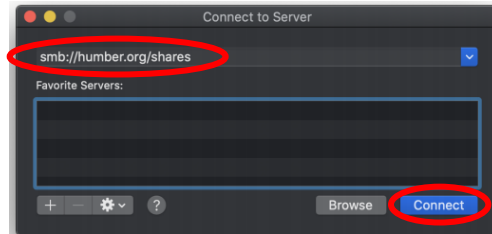
Mac Devices

In order to map your network drives, you will need to be connected to the Humber network remotely, via VPN or the F5 Client. Once you are connected:

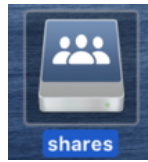
1. Launch **Finder** and click on the **Go** menu and choose **Connect to Server**.



2. In the new window, type the following: `smb://humber.org/shares` and click on the **Connect** button to connect to the I-Drive.



3. If you are prompted for a username and password, use your Humber credentials.




4. You should now see the shares drive icon on your desktop

Humber College Self Service

If you recently received your Mac device and have the **Humber College Self Service** app on your computer, you will do the following to access your network drives.



1. Launch the Humber College Self Service app and log in (top right corner) with your Humber credentials.
2. Open the F5Access application. If it is **NOT** installed, refer to [JAMF Quick Reference Guide](#) on the its.humber.ca site to set up the VPN path.
3. Click on the triangle  located on the top right corner of the screen and choose **Shares** and your H and I Drive should automatically be ready to access.

